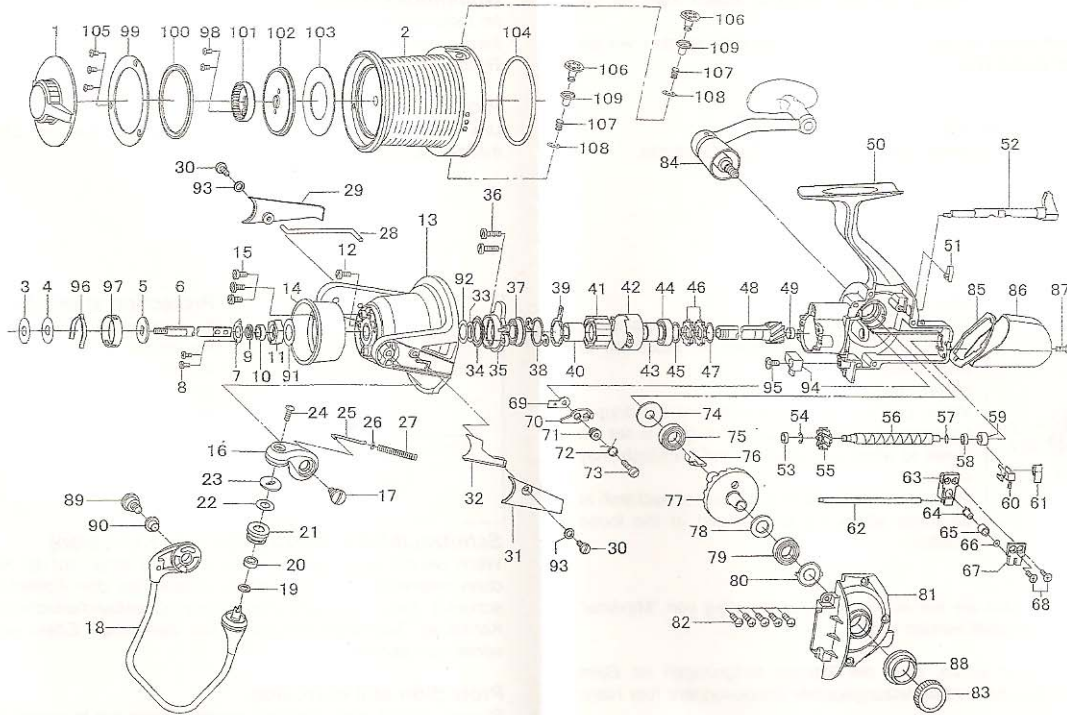


# TOURNAMENT BASIA 45KYOGOI QDX

Please order by parts number, not key number  
Veuillez indiquer le numéro de la pièce (Non "Key" No.)



Key No.	Parts No.	Parts Name	Désignation des pièces	Key No.	Parts No.	Parts Name	Désignation des pièces
1	6H269901	Drag Knob	Bouton de réglage du frein	57	6B411700	Washer (H)	Rondelle (H)
3	6E399200	Washer (A)	Rondelle (A)	58	6G326201	Collar (F)	Collier (F)
4	6E399203	Washer (B)	Rondelle (B)	59	6G254101	Collar (G)	Collier (G)
5	6E267501	Washer (C)	Rondelle (C)	60	6G176501	Worm Shaft Retainer (B)	Clips de vis double filet (B)
6	6G372901	Main Shaft	Axe principal	61	6G253401	Collar (H)	Collier (H)
7	6G180301	Rotor Nut Retainer	Plaque écrou de cloche	62	6G176401	Stabilizer Bar	Entretoise
8	6E468801	Screw (A)	Vis (A)	63	6G177101	Oscillating Slider	Coulisse
9	6G180201	Rotor Nut Shield	Joint de plaque	64	6G177201	Oscillating Pawl	Pilote d'oscillation
10	6G314901	Ball Bearing (A)	Roulement à billes (A)	65	6G177301	Collar (I)	Collier (I)
11	6G180101	Rotor Nut	Écrou de cloche	66	63750800	Washer (I)	Rondelle (I)
12	6G292401	Screw (B)	Vis (B)	67	6E264302	Oscillating Slider Cover	Couvercle de coulisse
13	6G178308	Rotor (A)	Cloche (A)	68	63521505	Screw (H)	Vis (H)
14	6G179809	Rotor (B)	Cloche (B)	69	6G175501	Anti-Reverse Pawl Plate	Plaque de cliquet anti-retour
15	6G292301	Screw (C)	Vis (C)	70	6G175601	Anti-Reverse Pawl	Cliquet anti-retour
16	6G178409	Bail Arm	Bras de pick-up	71	6E262102	Collar (J)	Collier (J)
17	6G188501	Screw (D)	Vis (D)	72	6E262201	Anti-Reverse Pawl Spring (A)	Ressort du cliquet anti-retour (A)
18	6G178603	Bail Assembly	Ensemble Arceau du pick-up	73	6G278301	Screw (I)	Vis (I)
19	6G301101	Collar (A)	Collier (A)	74	6G175701	Body Shield	Joint de bâti
20	6G301301	Ball Bearing (B)	Roulement à billes (B)	75	66354801	Ball Bearing (F)	Roulement à billes (F)
21	6G254201	Line Roller	Galet de pick-up	76	6E264502	Anti-Reverse Pawl Spring (B)	Ressort du cliquet anti-retour (B)
22	6G445501	Washer (D)	Rondelle (D)	77	6G597901	Drive Gear	Roue de commande
23	6G179702	Collar (B)	Collier (B)	78	63712800	Washer (J)	Rondelle (J)
24	6F608904	Screw (E)	Vis (E)	79	66354801	Ball Bearing (G)	Roulement à billes (G)
25	6E326702	Bail Spring Shaft	Axe de ressort de pick-up	80	6G175701	Side Cover Shield	Joint de couvercle
26	6E313901	Washer (E)	Rondelle (E)	81	6G177608	Side Cover	Couvercle
27	6E265601	Bail Spring	Ressort de pick-up	82	63516414	Screw (J)	Vis (J)
28	6G179201	Rotor Shaft	Axe de cloche	83	6F235408	Handle Screw	Vis de manivelle
29	6G179304	Cover (B)	Couvercle (B)	84	6H269601	Handle Assembly	Manivelle
30	6F891503	Screw (F)	Vis (F)	85	6G178001	Rear Cover Shield	Joint de couvercle arrière
31	6G178504	Cover (A)	Couvercle (A)	86	6G178111	Rear Cover	Couvercle arrière
32	6G177701	Rotor Plate	Plaquette de cloche	87	6G180001	Screw (K)	Vis (K)
33	63712836	Washer (F)	Rondelle (F)	88	6G239701	Collar (K)	Collier (K)
34	6G178201	Rotor Shield	Joint de rotor	89	6G253201	Screw (L)	Vis (L)
35	6G177001	Bearing Retainer	Rondelle de retenue du roulement à billes	90	6G253101	Collar (L)	Collier (L)
36	6G175203	Screw (G)	Vis (G)	91	6G253601	Washer (K)	Rondelle (K)
37	6F240001	Ball Bearing (C)	Roulement à billes (C)	92	6G253501	Washer (L)	Rondelle (L)
38	6G088401	Clutch Cam Retainer	Verrou de came d'embrayage	93	6G253301	Washer (M)	Rondelle (M)
39	6F641401	Clutch Cam	Came d'embrayage	94	6G256801	Collar (M)	Collier (M)
40	6G088201	Spacing Sleeve	Manchon	95	63517707	Screw (M)	Vis (M)
41	6G314501	Roller Clutch	Roulement à aiguilles	96	6F704902	Spool Click Leaf Spring	Ressort de réglage de bobine
42	6G175301	Roller Clutch Cover	Couvercle de roulement	97	6F204001	Click Leaf Spring Holder	Support de ressort de réglage du cliquet
43	6G176901	Collar (C)	Collier (C)	98	6G159901	Screw (N)	Vis (N)
44	66354801	Ball Bearing (D)	Roulement à billes (D)	99	6G373701	Spool Retainer	Clips de bobine
45	6G176801	Collar (D)	Collier (D)	100	6G374601	Spool Shield	Joint de bobine
46	6G176701	Anti-Reverse Ratchet	Rochet anti-retour	101	6G373601	Drag Knob Click Plate	Hauteur bruiteur de couteau de réglage du frein de bobine
47	6E339701	Washer (G)	Rondelle (G)	102	6G373501	Key Washer	Rondelle fixe
48	6G176601	Pinion Gear	Pignon	103	6G373401	Drag Washer	Rondelle de frein
49	6G175401	Collar (E)	Collier (E)	104	6G189001	Spool Ring	Lèvre de bobine
50	6H269501	Body	Bâti	105	6G318501	Screw (O)	Vis (O)
51	6E327801	Anti-Reverse Cam Spring	Ressort de came du cliquet anti-retour	106	6H051601	Line Clip	Clip fil
52	6G175812	Anti-Reverse Lever	Commande de l'anti-retour	107	6H066101	Line Clip Spring	Ressort de clip fil
53	6F283101	Ball Bearing (E)	Roulement à billes (E)	108	6B864101	Line Clip Retainer	Serre clip
54	63205901	Worm Shaft Retainer (A)	Clips de vis double filet (A)	109	6H066002	Collar (N)	Collier (N)
55	6G176201	Worm Shaft Gear	Roue de vis double filet	2, 98-109	6H269801	Spool Assembly	Bobine complète
56	6G176101	Worm Shaft	Vis double filet				